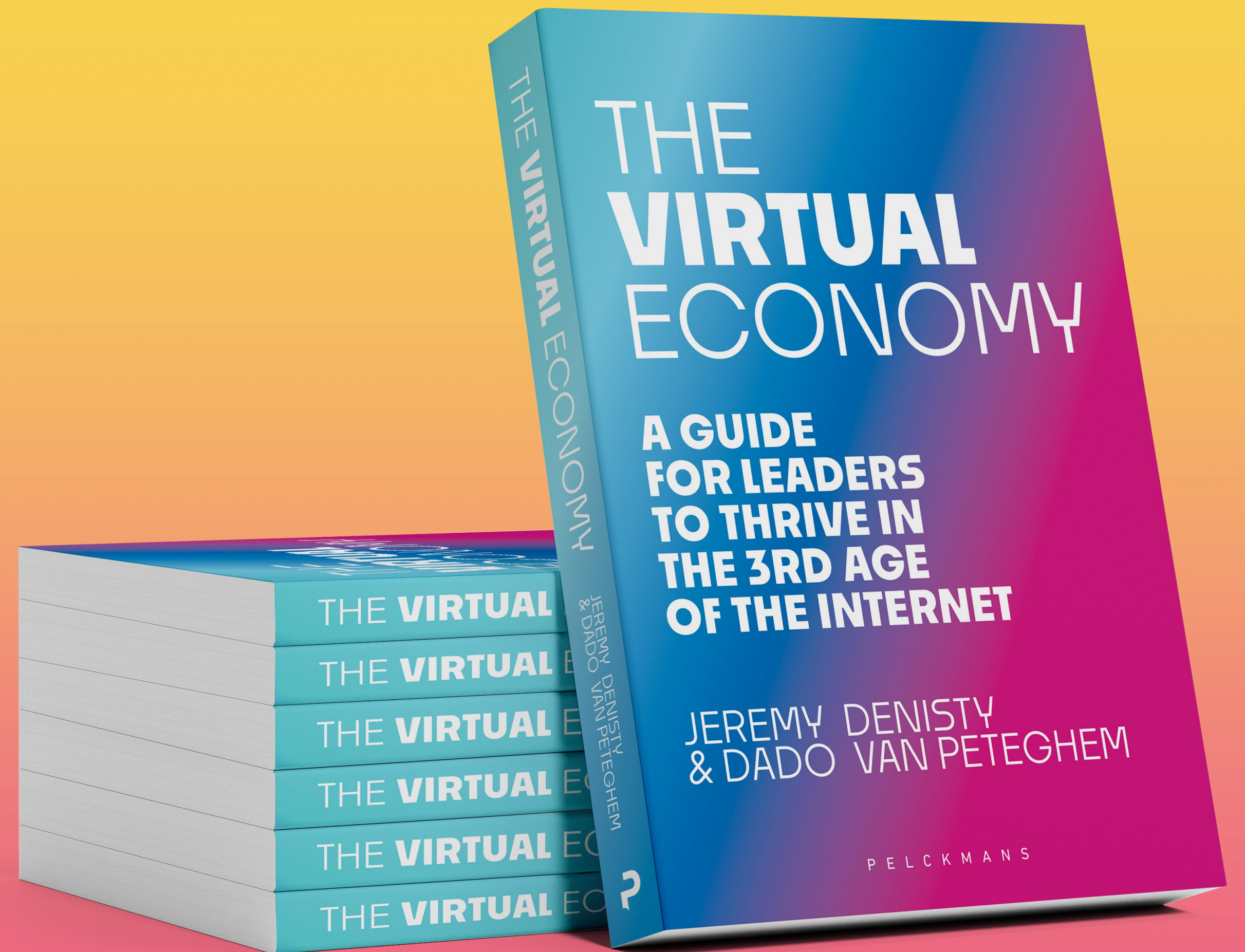


THE HUMAN ADVANTAGE IN THE AGE OF ABUNDANCE



dado@imagin3-studio.xyz

+32 474 826 807





JUST FOLLOW...

THE KIDS

THE DEVS

THE MONEY







**QUALITY
CANDY**
ECONOMY PRICED
2 BARS ONLY **00¢**
FRESHLY MADE!

NEW FALL VARIETIES
TAKE SOME HOME
ONLY **10¢** A BAG
USUALLY COST

Butter Scotch 5¢

Beech-Nut Gum

Beech-Nut SPEARMINT

FREDONICS 5¢

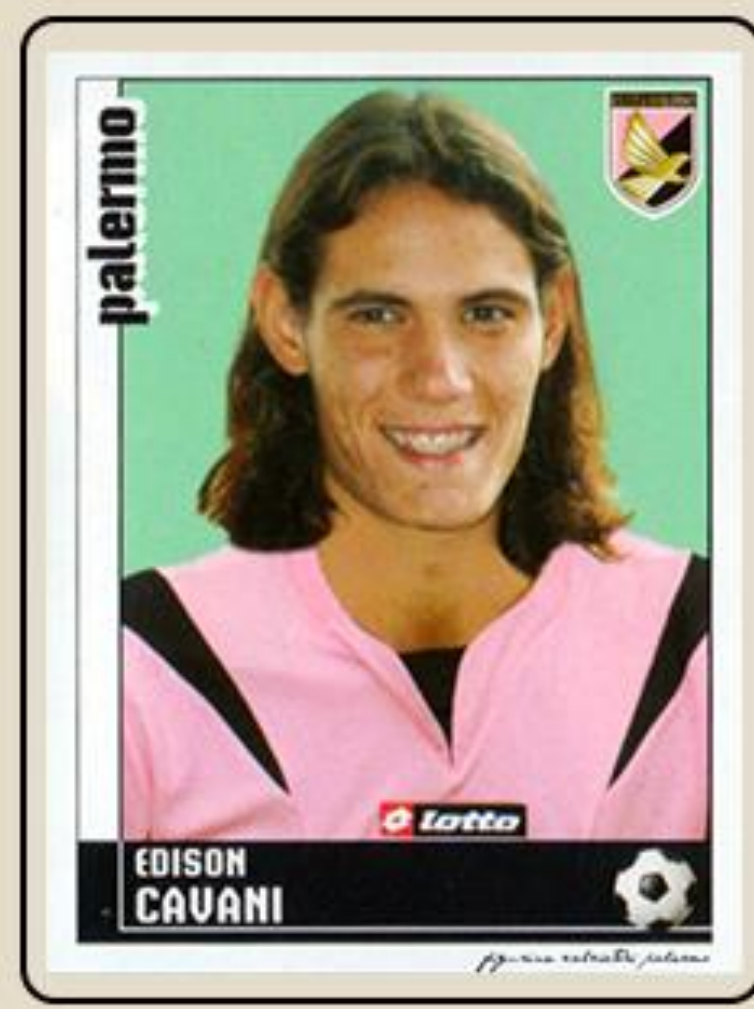
LOOK FOR
LOOK FOR
LOOK FOR
LOOK FOR
LOOK FOR
LOOK FOR

100¢ 100¢

100¢ 100¢

00¢

00



FEATURED 23 HOURS



MARIUS
800 V

BUILT-IN ROLLER SKATING EMOTE!



JOY
OUTFIT
1,200 V

+ BUILT-IN



RAINBOW BUBBLEGUM
300 V



BRITE BOMBER
1,200 V



RAINBOW SMASH
1,500 V



BRITE GUNNER
1,500 V



BRITE BLIMP
1,200 V



↓ NEXT



SUPPORT-A-CREATOR: NONE

ROBLOX

“56% of Gen Z say styling their avatar is more important to them than styling themselves in the physical world”



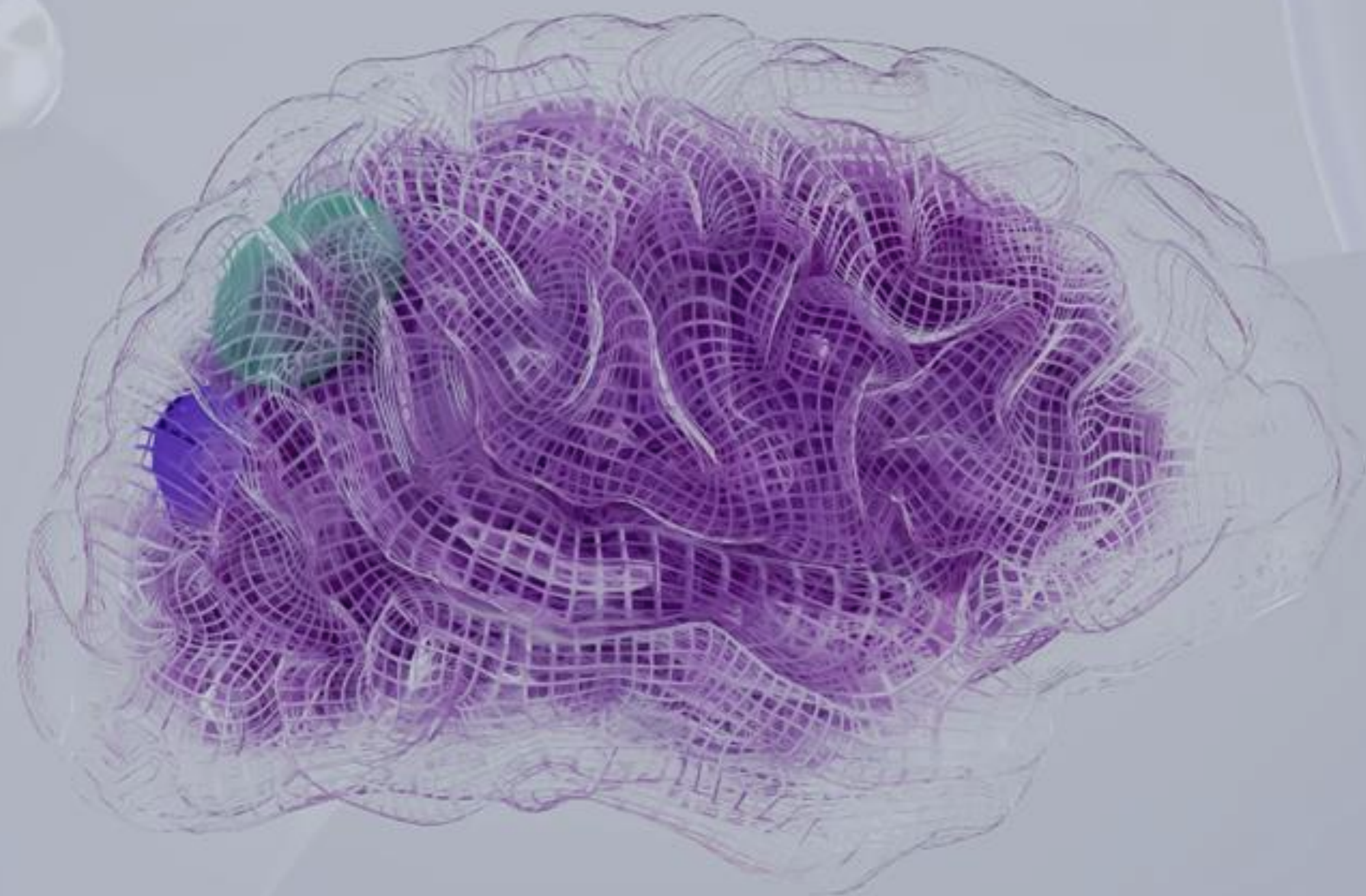


AI.AI.AI.AI.AI.AI.AI.
AI.AI.AI.AI.AI.AI.AI.
AI.AI.AI.AI.AI.AI.AI.
AI.AI.AI.AI.AI.AI.AI.
AI.AI.AI.AI.AI.AI.AI.
AI.AI.AI.AI.AI.AI.AI.
AI.AI.AI.AI.AI.AI.AI.
AI.AI.AI.AI.AI.AI.AI.
AI.AI.AI.AI.AI.AI.AI.
AI.AI.AI.AI.AI.AI.AI.
AI.AI.AI.AI.AI.AI.AI.
AI.AI.AI.AI.AI.AI.AI.
AI.AI.AI.AI.AI.AI.AI.
AI.AI.AI.AI.AI.AI.AI.
AI.AI.AI.AI.AI.AI.AI.
AI.AI.AI.AI.AI.AI.AI.
AI.AI.AI.AI.AI.AI.AI.
AI.AI.AI.AI.AI.AI.AI.

208 B



150



10x



1 person

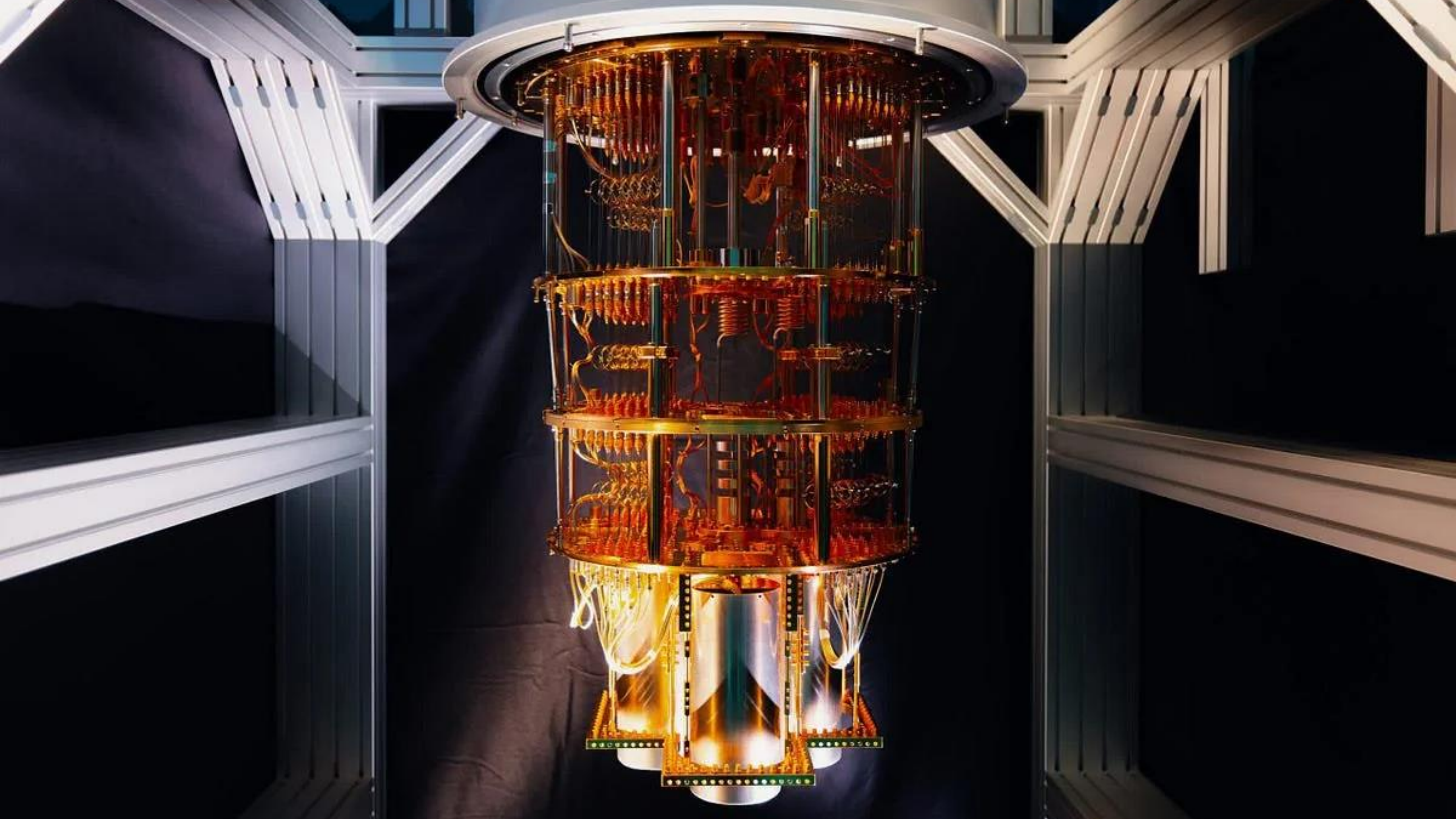






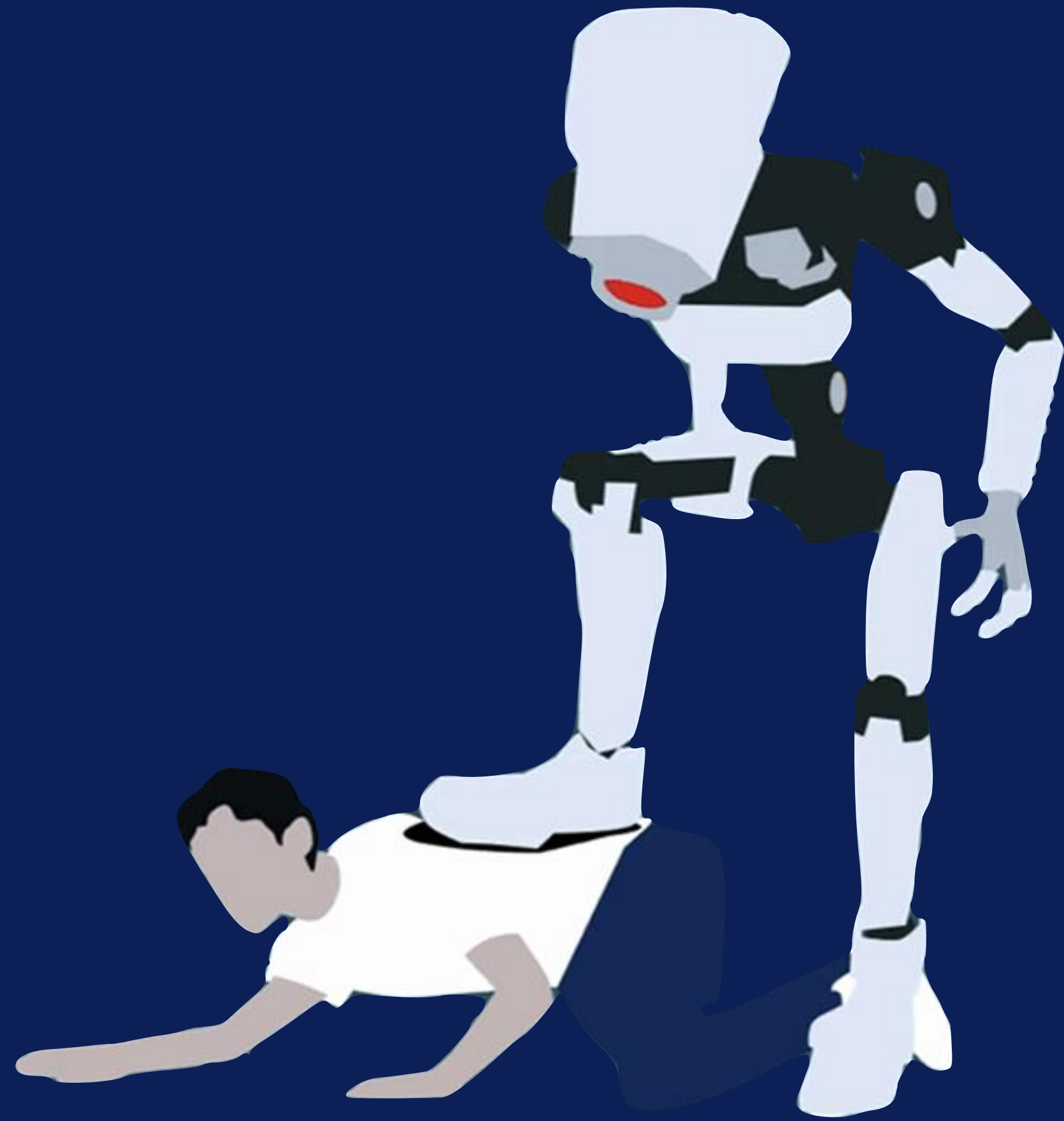
A close-up photograph of a Rubik's cube being solved by a mechanical device. The cube is partially solved, with some faces showing uniform colors (red, blue, yellow, green). The mechanical device consists of metal rods and a central motor assembly. The text "0.388 seconds" is overlaid in large white font across the center of the image.

0.388 seconds



The background of the image is a solid blue color. Overlaid on this background is a repeating pattern of small, purple, textured spheres. Each sphere has a complex, swirling, organic texture and casts a soft shadow to its right and slightly forward. The spheres are arranged in a regular grid across the entire frame.

AGI




TEAM ROBOT



TEAM HUMAN





Jack Forge 
@TheJackForge

Volg



The next 10 years are going to be crazy.

Tech bros are going to have to put down
their MacBooks.

And learn how to use a hammer.



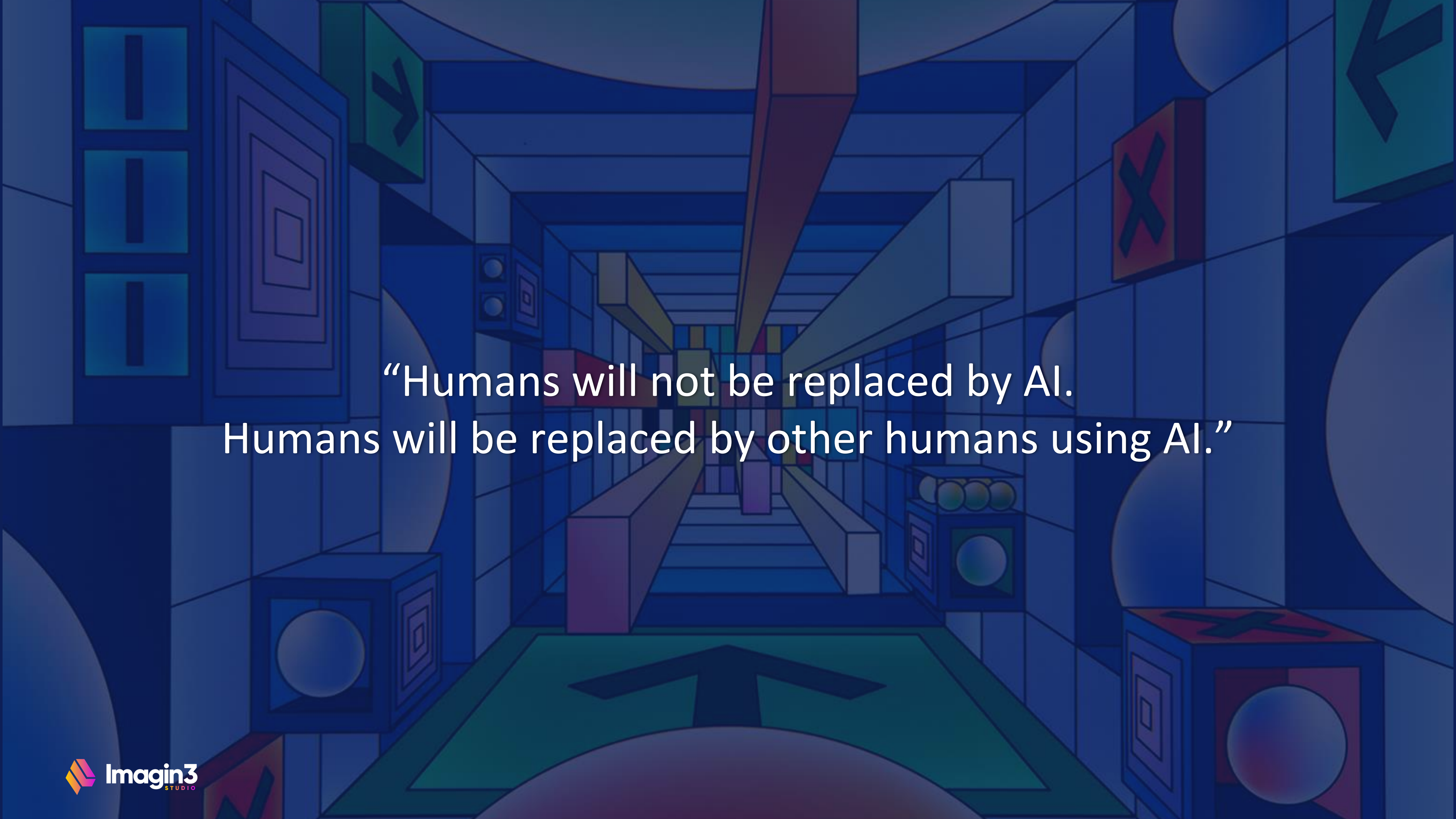
DULL DIRTY DANGEROUS



LAWYER



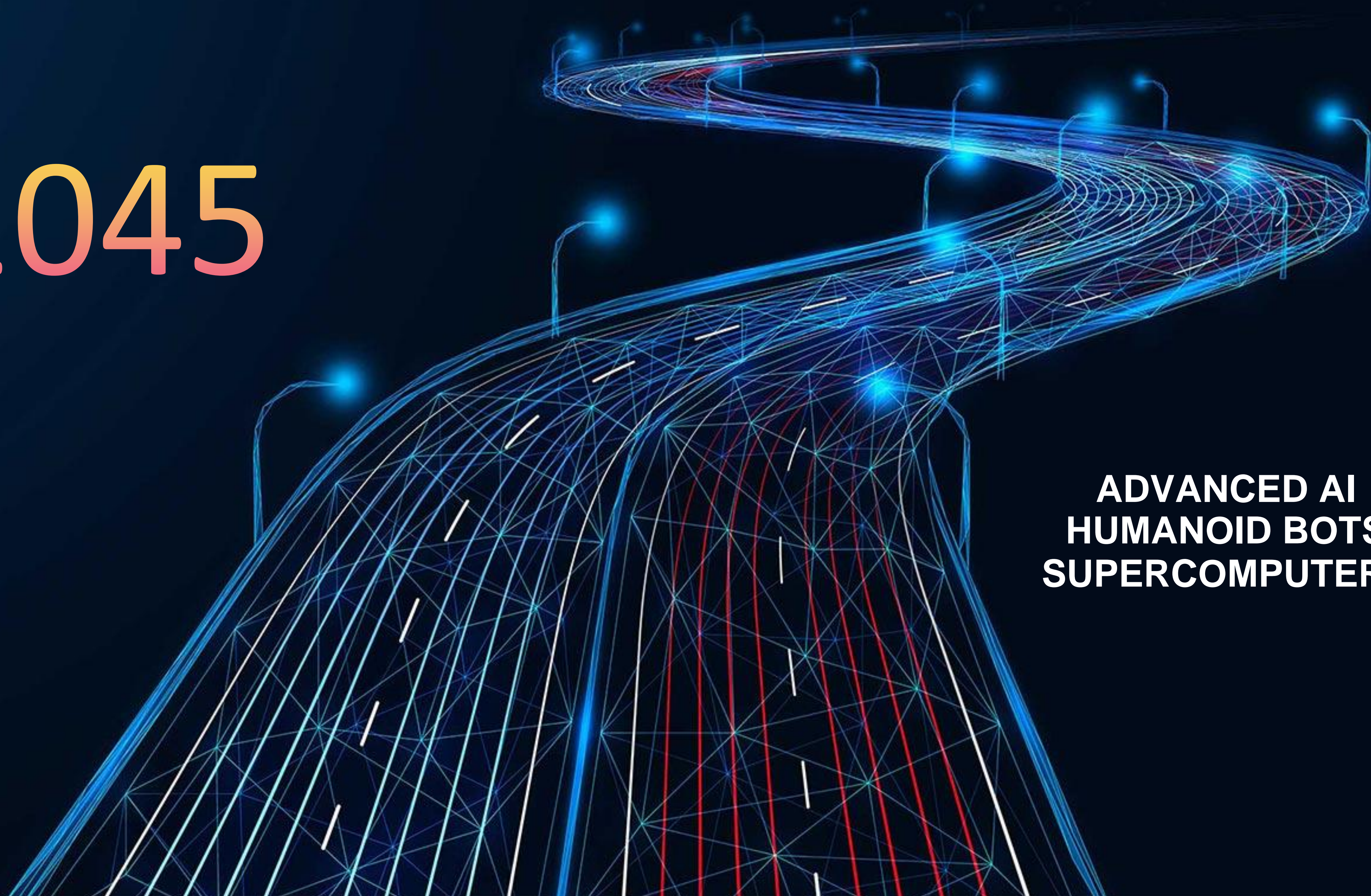
Legal Research	Negotiation	Client Counseling	Contract drafting	Document review	Conducting depositions	AI Ethics
----------------	-------------	-------------------	-------------------	-----------------	------------------------	-----------



“Humans will not be replaced by AI.
Humans will be replaced by other humans using AI.”

2045

**ADVANCED AI
HUMANOID BOTS
SUPERCOMPUTERS**



A dimly lit classroom with wooden desks, a chalkboard, and a bookshelf. The text "What would you advise kids to study?" is overlaid in white.

What would you advise kids
to study?

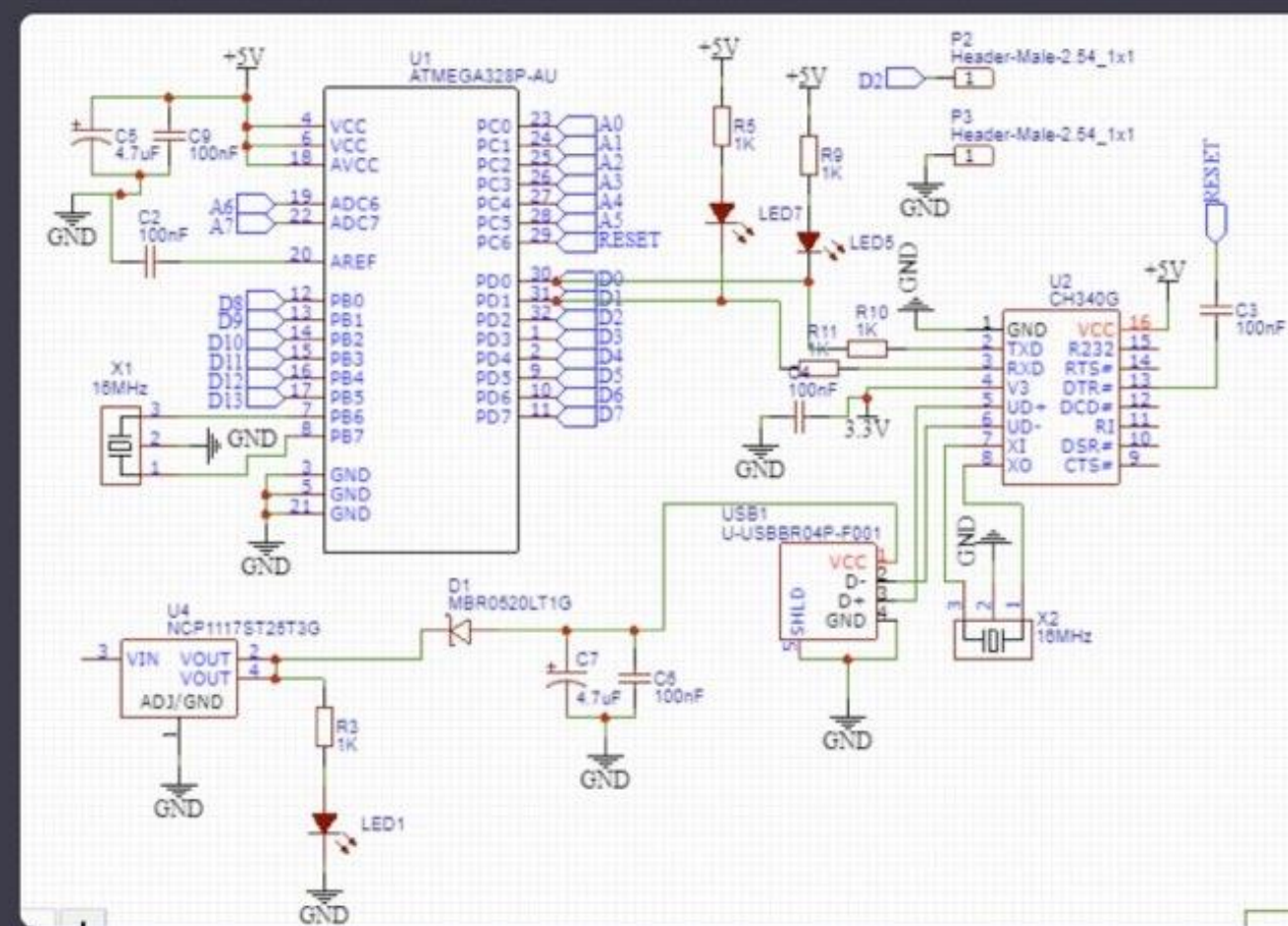












What is this?



This image presents a schematic diagram of an electronic circuit. Let me provide a breakdown of the components and their interconnections observed in the schematic:



1. **ATMEGA328P-AU (U1):** This is the central microcontroller, a popular choice in DIY electronics, especially known for its use in Arduino boards.
2. **Oscillator Circuit (X1 & associated components):** A 16MHz crystal oscillator provides the clock signal to the ATMEGA328P microcontroller.
3. **Decoupling Capacitors (C2, C4, etc.):** These capacitors are connected to the power lines of the microcontroller to stabilize voltage and prevent transient voltage spikes.
4. **LED Circuitry (LED1, LED5, LED7 & associated resistors):** These are light-emitting diodes. The resistors (e.g., R5, R9, R10) in series with the LEDs limit the current flowing through them.
5. **CH340G (U2):** This is a USB to serial converter, allowing the ATMEGA328P to communicate with a computer via USB.
6. **USB Connector (USB1):** This is likely a USB-B connector that provides power and a communication interface to the board.
7. **Voltage Regulator Circuit (U4 & associated components):** The NCP1117ST25T3G appears to be a voltage regulator, converting input voltage (VIN) to a stable output voltage, which seems to be 3.3V given the associated context.
8. **Protection Diode (D1):** The MBR0520LT1G diode likely provides reverse voltage protection, preventing damage to the circuit if power is connected backward.
9. **Connectors (P2, P3):** These are header connectors, probably to allow external components or other boards to interface with this circuit.
10. **Ground Symbols (GND):** These symbols denote connections to the common ground plane.

Stop generating





WHAT'S OUR HUMAN

magjic

A large crowd of young people, mostly students, are gathered outdoors at dusk or dawn. Many of them have red paint or face paint on their faces. They are cheering, shouting, and raising their hands in the air. Some are holding up smartphones to take photos or videos. The background shows palm trees and a building with a sign that partially reads "Welcome". The overall atmosphere is one of excitement and celebration.

SENSE OF BELONGING

LONELINESS EPIDEMIC

GEN Z MOST LONELY GENERATION



*"ONCE UPON A TIME, PEOPLE WERE BORN INTO
COMMUNITIES AND HAD TO FIND THEIR
INDIVIDUALITY."*

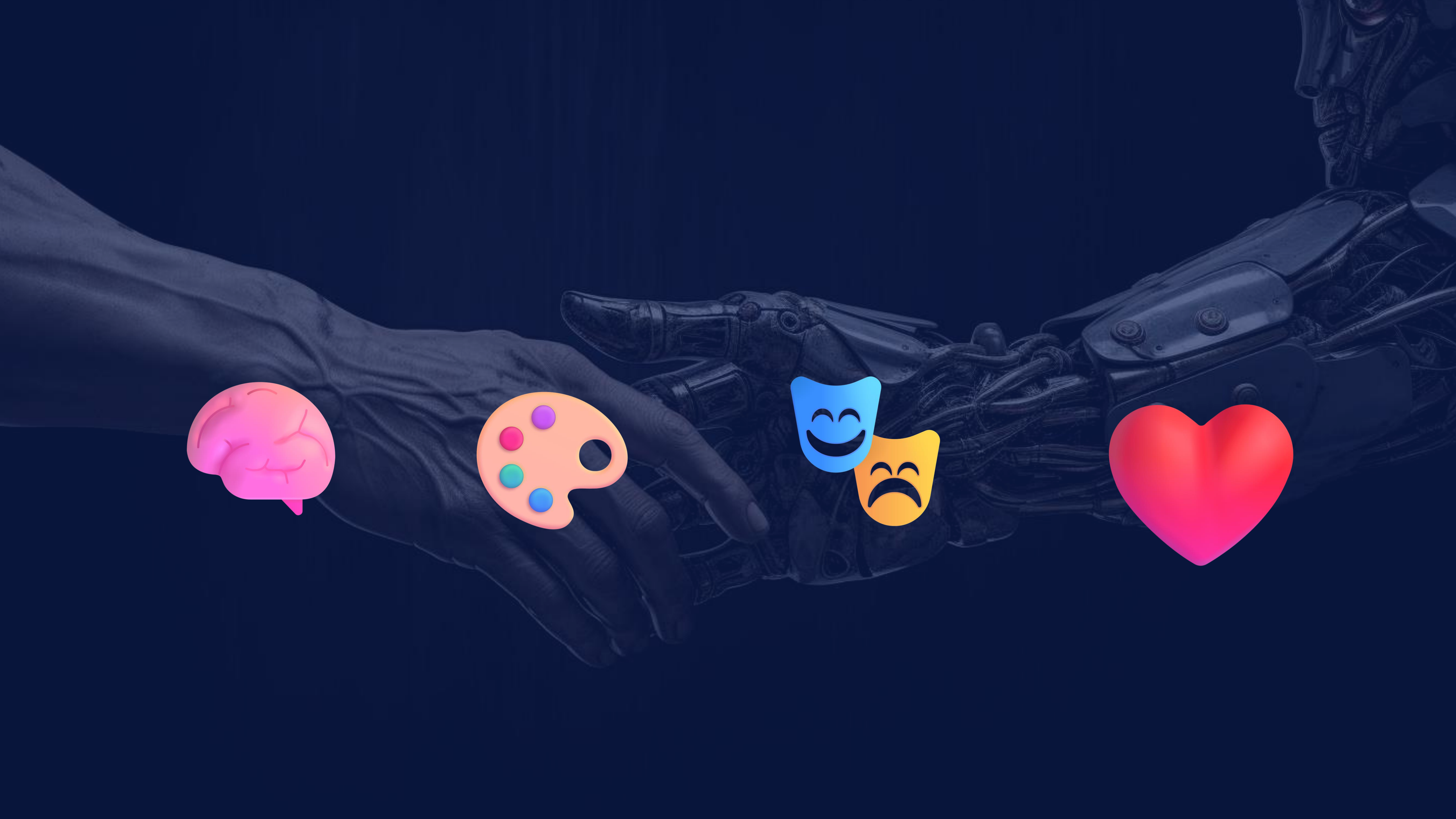


TODAY, PEOPLE ARE BORN
INDIVIDUALS AND HAVE TO FIND
THEIR COMMUNITIES."

K-HOLE, "YOUTH MODE"











...the health service of
...the health service of
...the health service of

FREE

An elderly man with white hair and a friendly smile is seated in a wooden chair with a patterned cushion. He is wearing a light-colored, short-sleeved shirt with thin horizontal stripes and light-colored trousers. To his right, a large, shiny red gift bag sits on a wooden surface. The background is filled with lush green foliage, creating a bokeh effect. The overall scene is warm and suggests a moment of joy or celebration.

ARE WE GIVING IT
OUR ALL TO BE HUMAN?

THE BLUE ZONE LONGEVITY FORMULA




DIET



PHYSICAL MOVEMENT



SOCIAL CONNECTION

A group of elderly people, mostly women, are gathered around a table. They are looking at a tablet computer held by one of the women. The scene is indoors, possibly in a community center or a home. There are several blue and white patterned cups on the table. The lighting is soft and natural. The overall atmosphere is one of learning and social interaction.

MO • AI (/mo,eye/)

OFFLINE



m



ONLINE

ANALOG



a

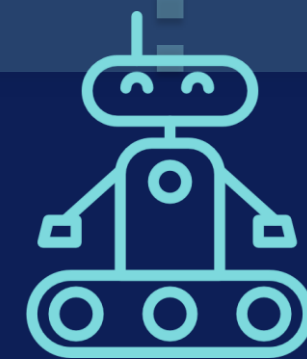


DIGITAL

MAN



g

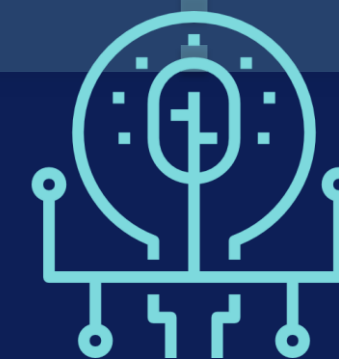


MACHINE

EMOTION



i



ALGOS

PHYSICAL



c



VIRTUAL



DON'T BE STUCK IN THE MIDDLE

COMMUNITY
They won't stay



THE MAGIC TRIANGLE

EXPERIENCE
They won't come

LOYALTY
They won't come back





WHAT'S YOUR
MINIMUM VIABLE COMMUNITY?



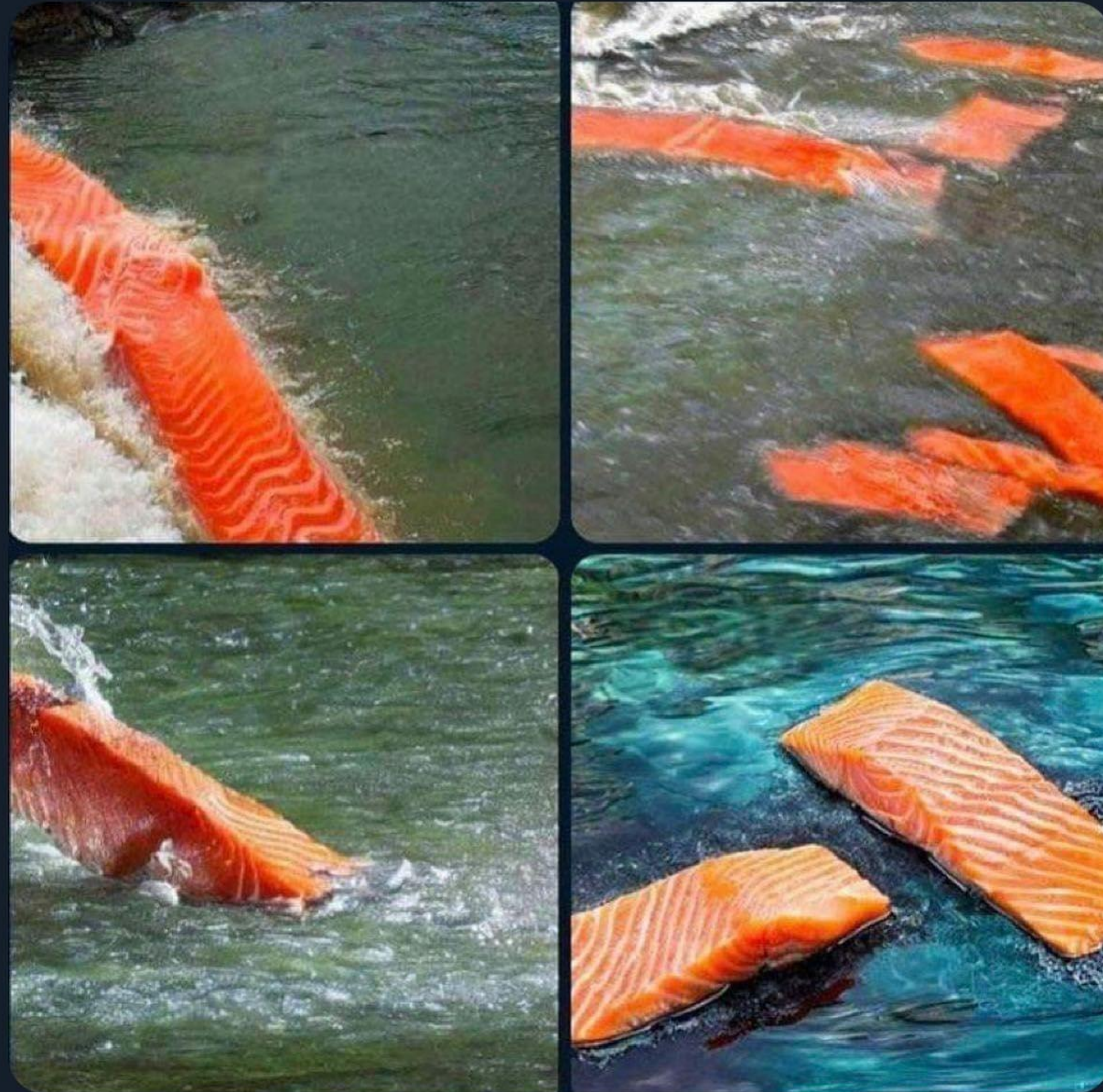


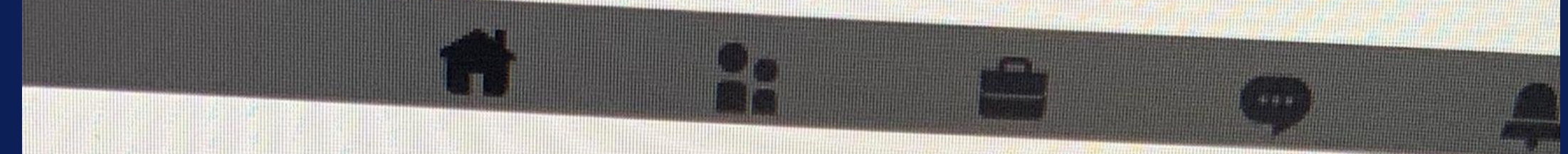
ARE YOU GOING TO BE A
FILLER?

OR WILL YOU BE
UNFORGETTABLE?

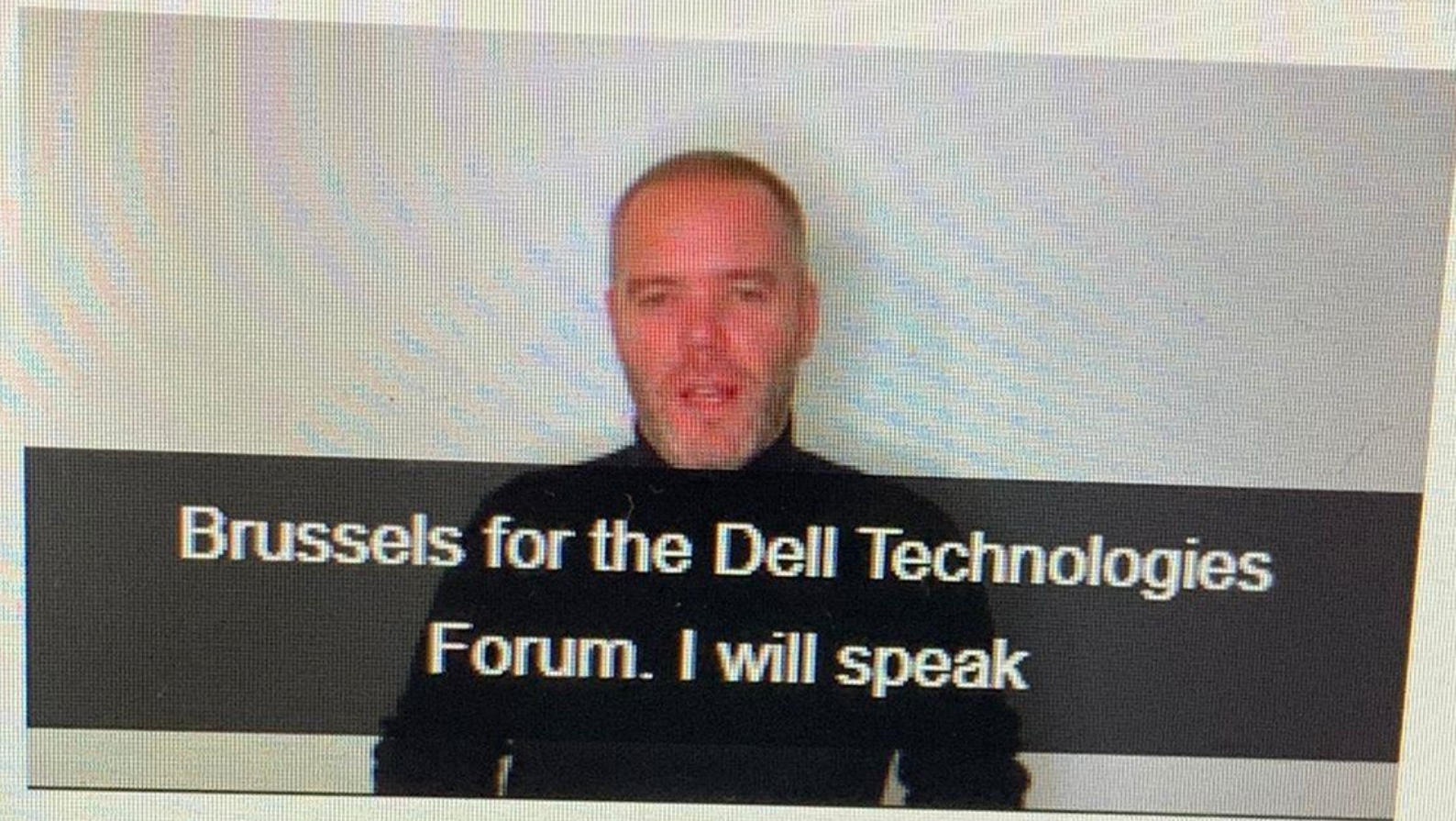


The AI prompt was “salmon in the river”. So majestic.





ptions



Captions

- 05 Hello everyone My name is Dad from Bethlehem and I'm very
- 07 much looking forward to seeing you next Thursday in
- 10 Brussels for the Dell Technologies Forum. I will speak

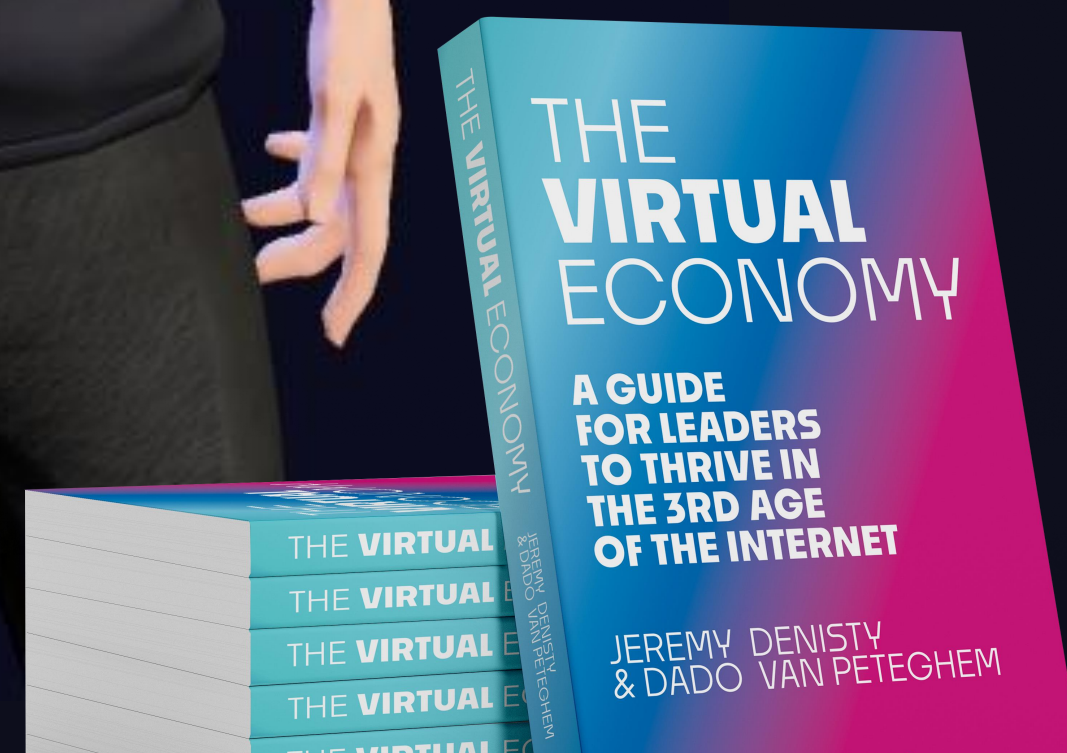
ve captions





Spend 50H 'doing' AI
before Summer

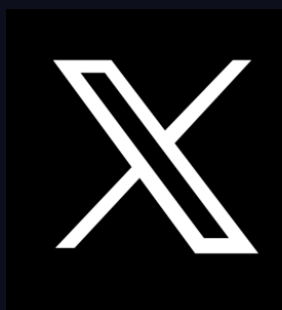




<https://www.linkedin.com/in/dadovanpeteghem>



<https://www.instagram.com/dadovanpeteghem>



<https://twitter.com/dadovanpeteghem>

Thank you :-)

dado@imagin3-studio.xyz

+32 474 826 807

